

:

2010

2010 / 8

2010

2010

.1

2010

307

•

1.24

2010

2010

%35

•

2009

2

2009

•

90

2010

•

.1

%1.5

2010

280

•

.(1.37)

2010

71

•

250

56

•

2010

.2010

208 2010

•

300

(2.2)

68)

(98)

.(

.2

%35 2010
(5 1) 463 2 2009
2010

(55)
(%7) 2010

2010 2.04

2.03

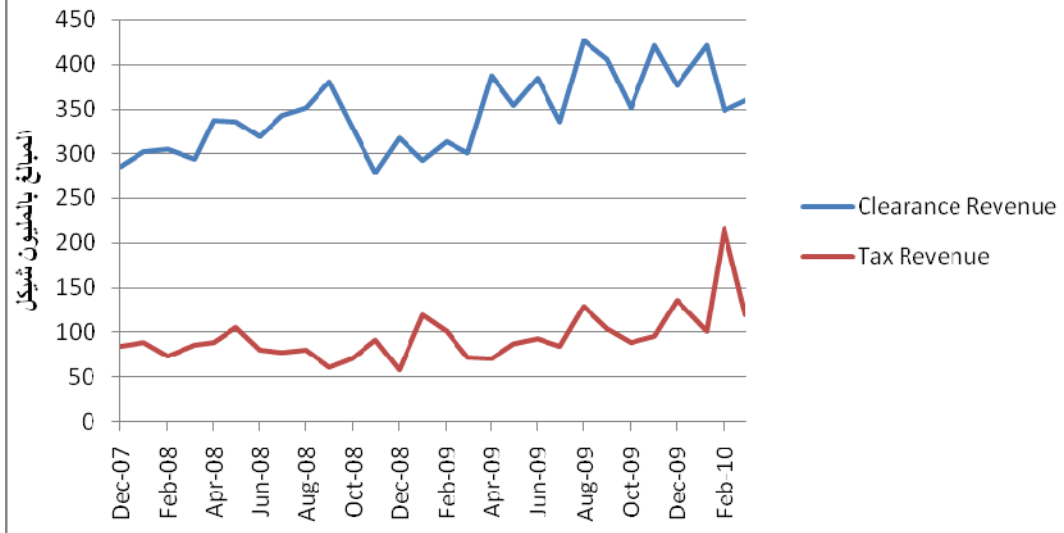
440 2010
1.93 2010

117 2010
5) 2009 %54

.(1

3.73 2010 2
%7.8 4.04 2009

شكل 1: إيرادات المقاصة و إيرادات الضرائب المحلية بالمليون شيكل



2010 44

2009 15

2010 10

2009 303

2010 35%

2009 2010

2010 2010

1.326 2010
 .(1.320)
 2.7 2010 /
 2009 .
 .³2009 %25 20
 18
 2009 .
 .(55) 216
 227 303 2010
 .⁴
 2010 23
 100 2009
 1.1 .
 .3
 747 2010
) 2009 %13
 .2009 %14 (2 1)
 90 2010

(1) 395 2010
2009 %8.6

.5

%4

.-2010 / - 2010 /

%1.5

3.7 2010) %1.8

.(3.8

2010

22 373 (3)

/

147,726

86,144 2010 / 149,580 2009 /

1,854

1,508

(2009 /)

.2010

2010

280

343 2009 399 2009

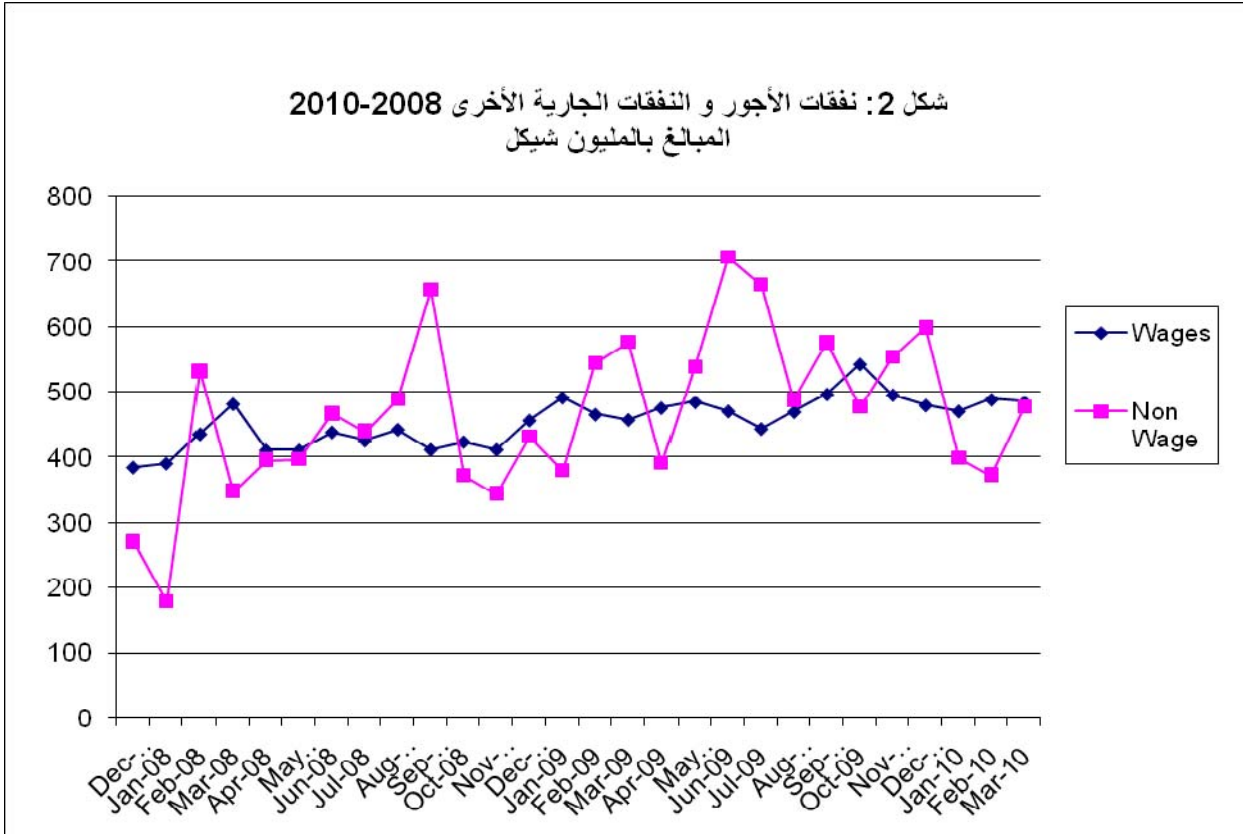
.(2 1)

2010 /

5

- 2 2010 /
7.5 2009

-2009 /



2010

200

2010

(2) 108

2009

%24

.(6) 2009 %21
()

60

170 2010
(-2 - 206) 2009
234 2009

67 2010 /
52
18

1.6 2010
43
2010

2009 2008

(2 1) 71 2010

101) 2009

.(76) 2009 (

250 2009 380) 2010

(2010

2010

:

2006

2009

350

70

40

4

2010

32

36

.2010

28

56

(2 1) 2010

72

2009

9

2009

32

1000

1000

.2010

307

2010

1.228

.(1)

				1.243
			.2010	
		.(3)		260
208		2010		
	(106)		
			.(-7 -	96)
			300	
				98
	(45)		
			23	
				2.2