

:

**2010**

**2010 / 25**

2010

2010

( %1.9) 30

%11

.2010 / (NEDCO)

48

200

2008

2010 463  
( 1 ) 463  
2010  
2009<sup>1</sup>  
2009<sup>2</sup> 2009 %21 2010 2010 %10  
45 43

102 2010  
117<sup>3</sup>  
(2009) %53  
2010 45  
27  
40 45

[www.pmf.ps](http://www.pmf.ps)

2010 9 2010

1

2010

2  
3 يشمل هذا الرقم المبلغ الذي

21

18

.(2010)

2010

%53

.(1 ) 2009

2009

38

2010

377

2010

60

:

10

%37

7.3

2010

.(5 )<sup>4</sup>

2010

/

40

2010

58

.2010

2010

17

225

45

( 12.5)

4

2010

22.7

.2011

2010

( )

4

5.3

.(2009)

/

2008

6

%8

.5 2010

:

.(5 1 ) 2010

/

/

( 64) %2.6

2009

.2009 /

%15

2010

(2009)

132

.2010

129

2010

.2009

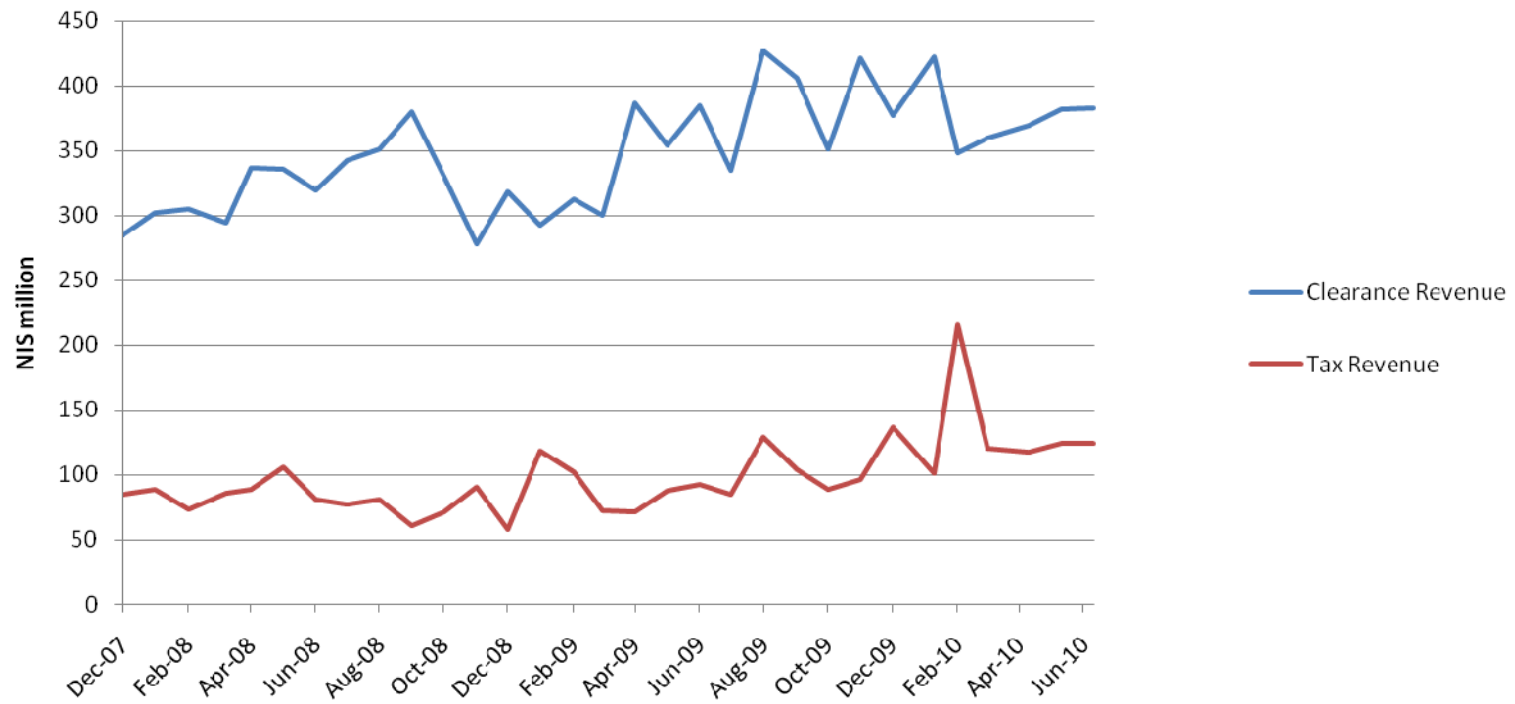
/

5

6

**Chart 1: Clearance and Domestic Tax Revenue**

**NIS millions**



40

1.28

1.32

15

141 2010

250 /

.7 2005

%22

85 2010

2009

18

.2010 /

2009 /

.1

.(1

747)

%7

796 2010

2009

2010

5.8

2010

/ /

.<sup>8</sup>

6.2

2009

2010 / 4

7

%7.6

8

2009

2010

( 3.15 )

3.17

2010

395)

391

2010

.(

9

10

2009

2010

%7

2009

%10

2010

%2 2010

%4

%6

1.58

2010

:

30

%1.9

2010

:

( 7.5)

/

.(2009)

www.pmf.ps

9

(2009

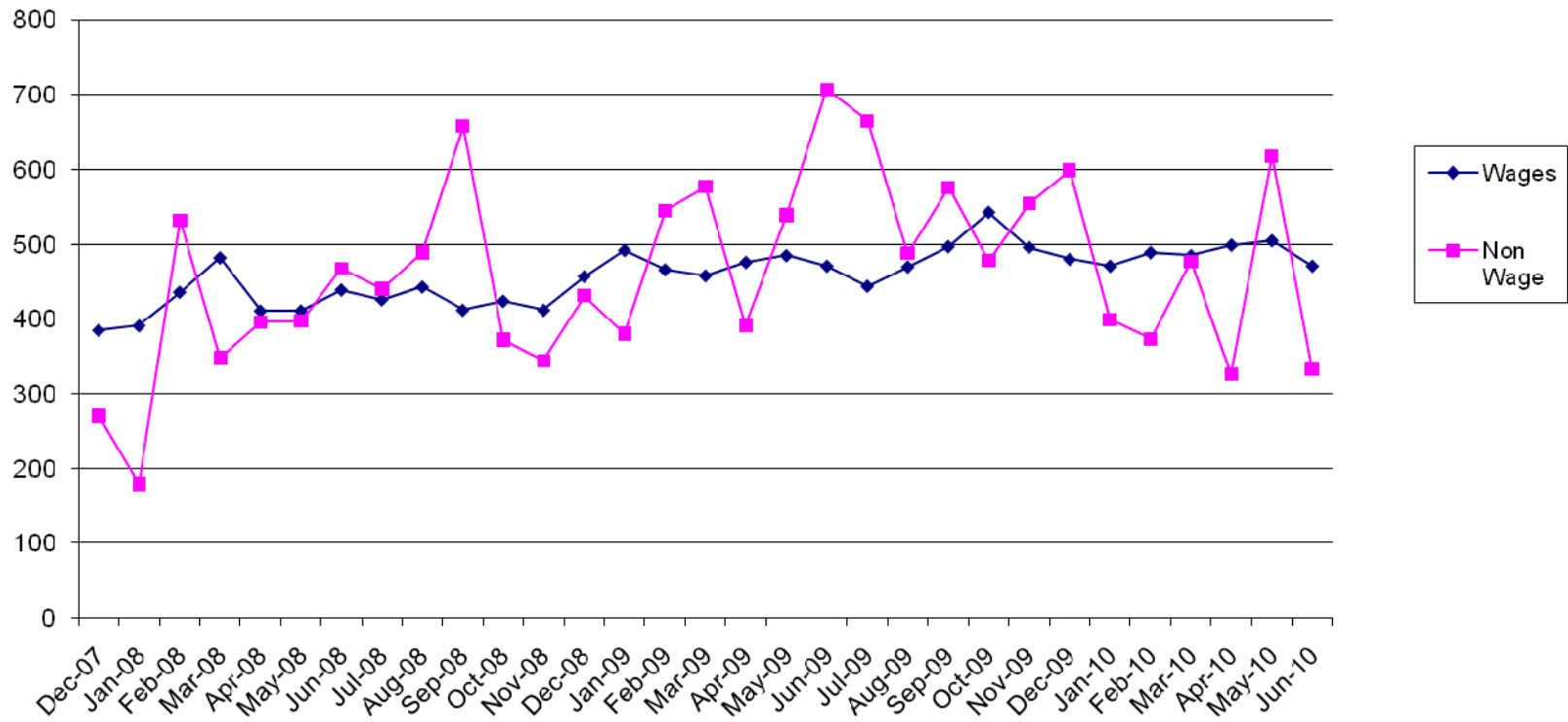
43.5)

10

( 34.7)



**Chart 2: Wage and Other Current Expenditure 2008-10**  
(In millions of NIS)



. / .  
 2010 / .  
 .  
 2010  
 3.75 10  
 .3.8  
 .  
 132 130  
 .(2010)  
 (2010)  
 3 394 (2010)  
 2010 22  
 .(4 3 )  
 ( )  
 .<sup>11</sup> 2009  
 18 203 /  
 49 (7 4 )  
 10 /  
 149,827 149,580  
 . 247 2010 /  
 2 107 2009 11  
 .2010 /

		362		114
63,474			38	
	.86,353			324
1627	474	2101		
%22		338	2010	
. <sup>12</sup> (2	1	)		
		2010	/	
2010				
	2009		%12	
			100	
			2010	
			50	1.37
294	2010		(4 3 )	
			44	
		48	2010	
(2	) 2010		121	
				108
			%14	<sup>13</sup> 2009
2009		2010		
	2009		%12	
<hr/>				
	( )	9		<sup>12</sup>
				<sup>13</sup>

2010 / 5.6 ) 3.8 .(

30

2010 209

177 2009 (2 ) 170

57 12 /

30 / 95

56 /

/ 13

8 11

7

2010 420

13 800

2010 8

1.6

13 (2010) 10

.2011

68 2010

.2010 72 (2010)

(2009 ) (2010 )

139 2010

41

.2009

%19

250 2010

:

14

2010 /

185,000

180,000

.2010 /

2010

56

69

63

2009

(6 - 26)

.( 3) ( 22)

2010

125

24.4

40 .(7 1 )

22 40

53.6

[www.pmf.ps](http://www.pmf.ps)

2010

14

/

346 2010  
 40  
 2010 .(2 ) 2010 /  
 (2009) 653  
 2010 . 30 862  
 4.723  
 15 1.258  
 .( 3.8 = 1)  
 %11 ) 420  
 ) 2010 255 ( )  
 .2010 ( %11  
 318 2010  
 .(7 ) 208  
 . 95  
 (PEGASE)  
 [ ]  
 110  
 50 2010  
 %20 .Trust Fund  
 %44 %30  
 . 200  
 2010  
 121  
 .(8 ) 665

) 63 102 .2009 (

:

750  
444  
%26

/ 1 2008  
2008

.2010 /  
.2009 /